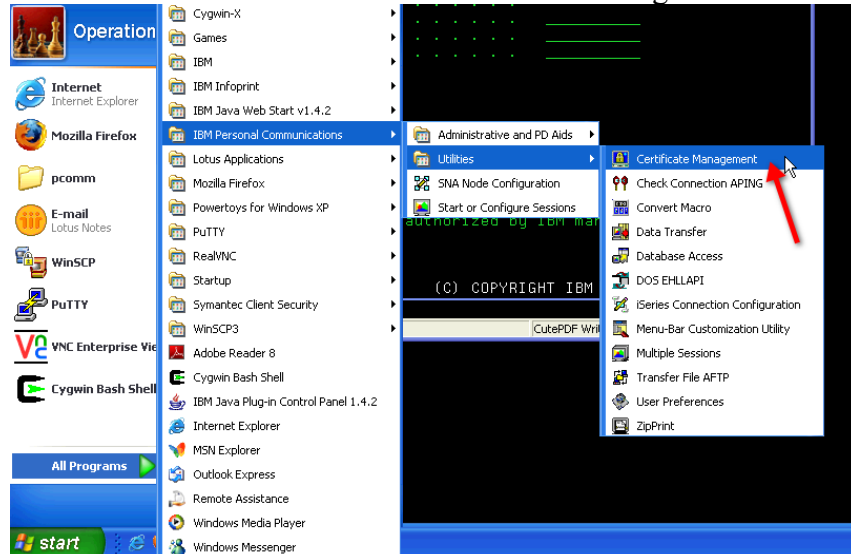
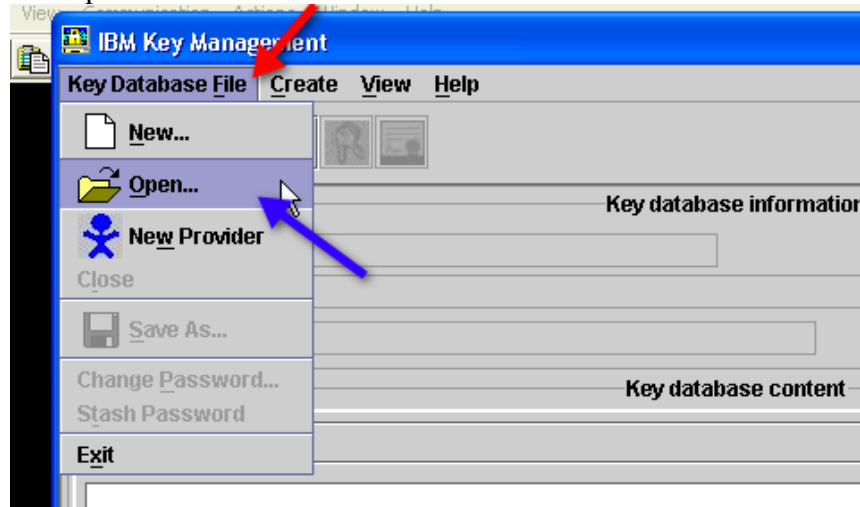


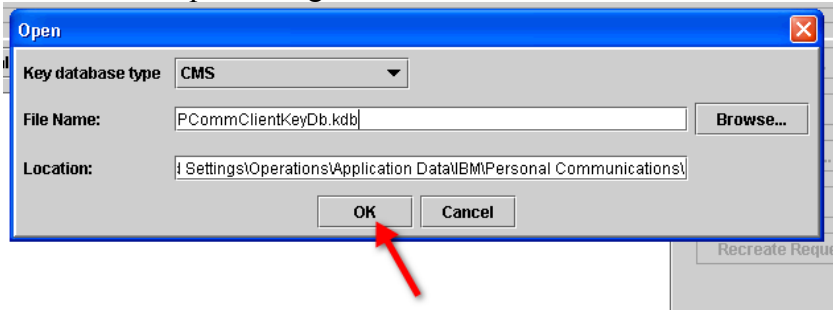
1. Download demoCentralTn5250.cer from <http://iserieds.dfw.ibm.com/certs> and save file in c:\certs.
2. Open the PComm Certificate Management utility
  - a. The default location is: Start->All Programs->IBM Personal Communications->Utilities->Certificate Management



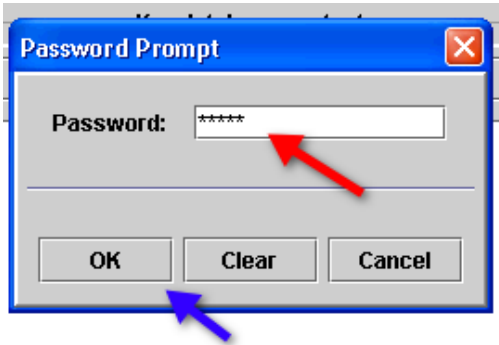
3. Click “Key Database File”
4. Select “Open”



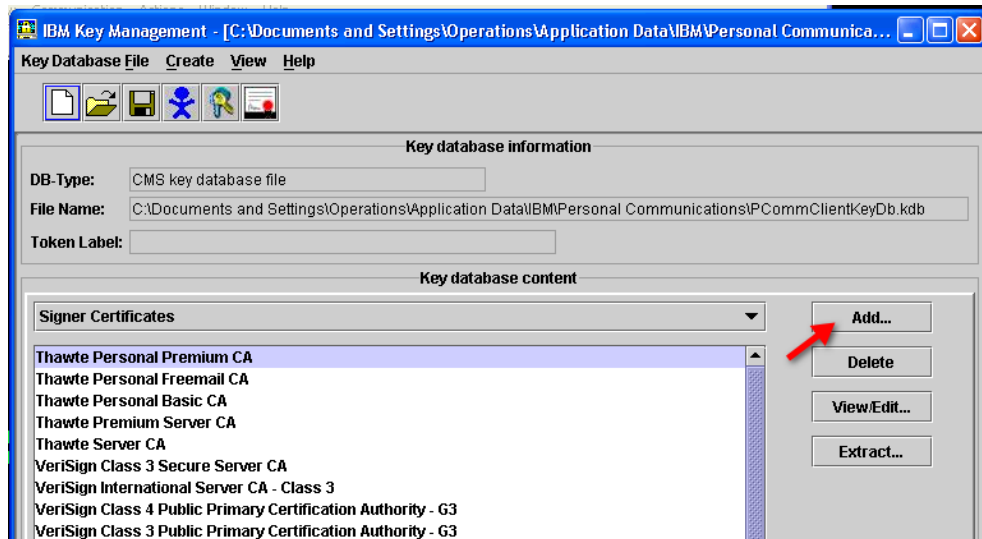
5. Click OK in the Open dialog.



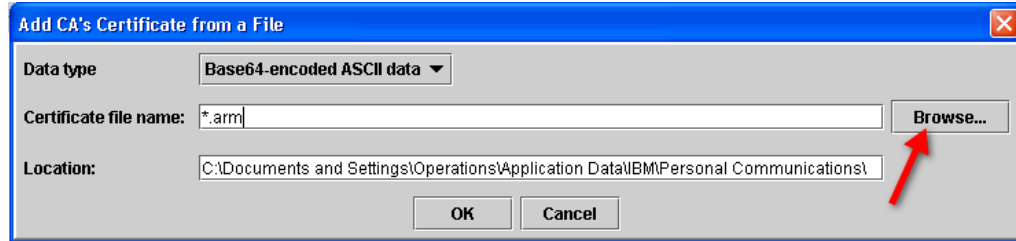
6. At the password prompt enter “pcomm”  
“pcomm” is the default password. If you changed it use your current password.
7. Click OK



8. Click “Add...”



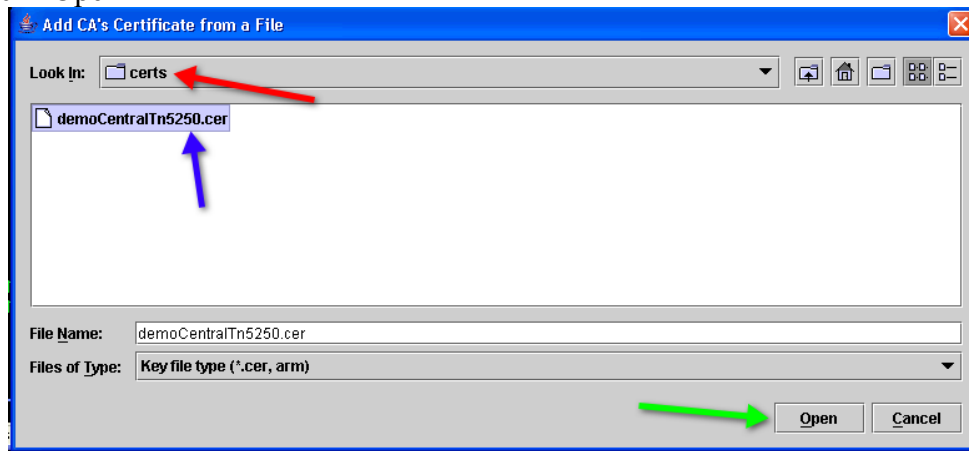
9. In the “Add CA’s Certificate from a File” click browse



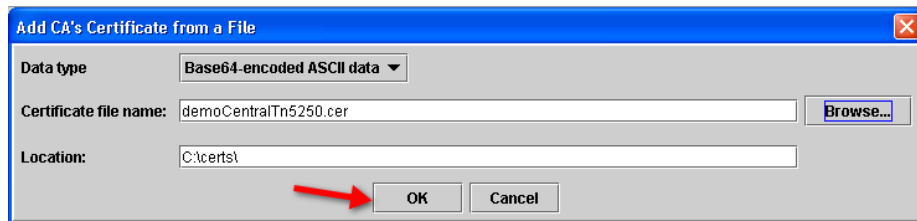
10. In the “Look In:” drill down menu select c:\certs

11. In the file list select demoCentralTn5250.cer

12. Click “Open”



13. Click OK



14. In the “Enter a Label” enter “DemoCentralTn5250”

15. Click OK



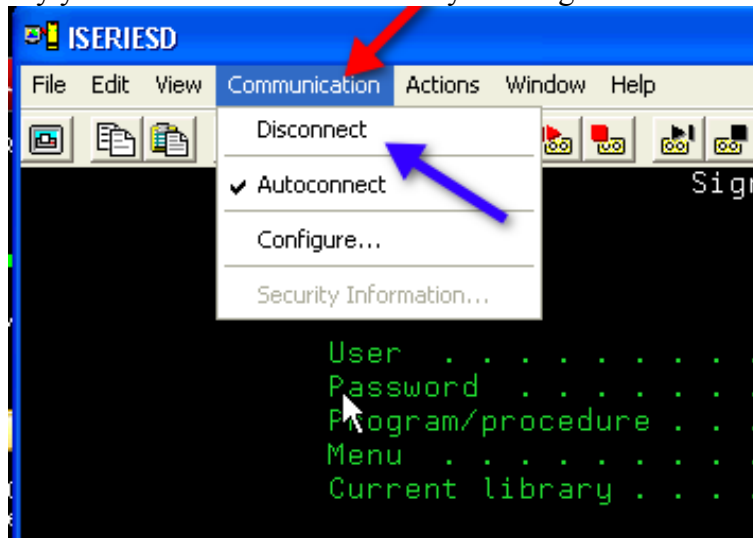
ass 3

ification Authority C3

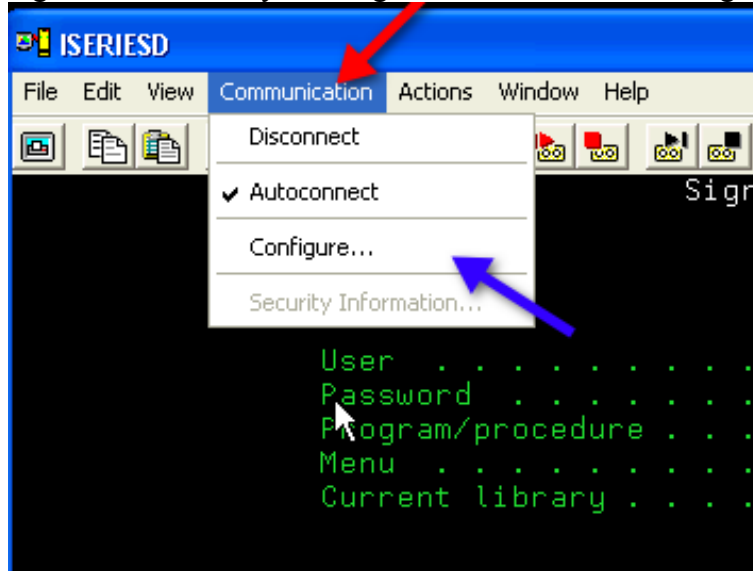
16. Close the Certificate management program.

17. Open your PCOMM 5250 Session to ISERIESD.

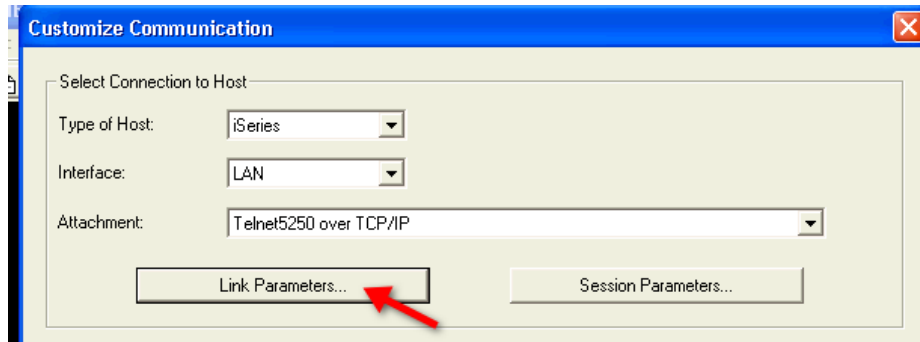
18. Verify your session is disconnected by clicking Communication->Disconnect



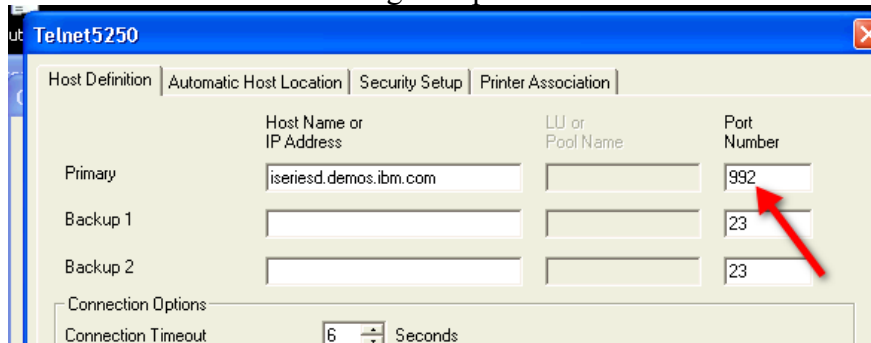
19. Configure the session by clicking Communication -> Configure



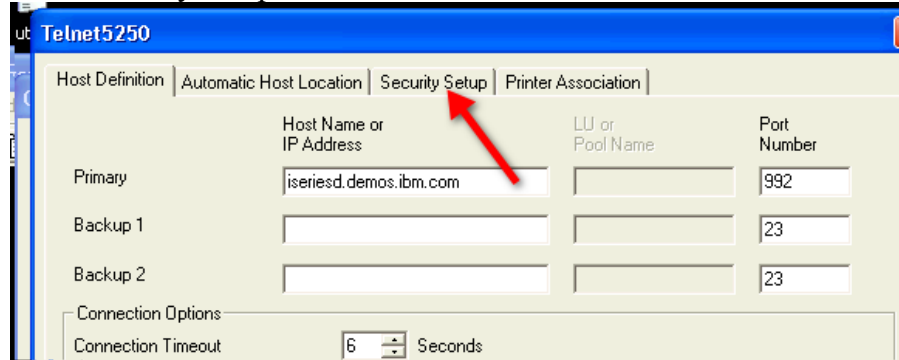
20. In the Customize Communication windows click Link Parameters



21. In the Telnet5250 Windows change the port number to 992

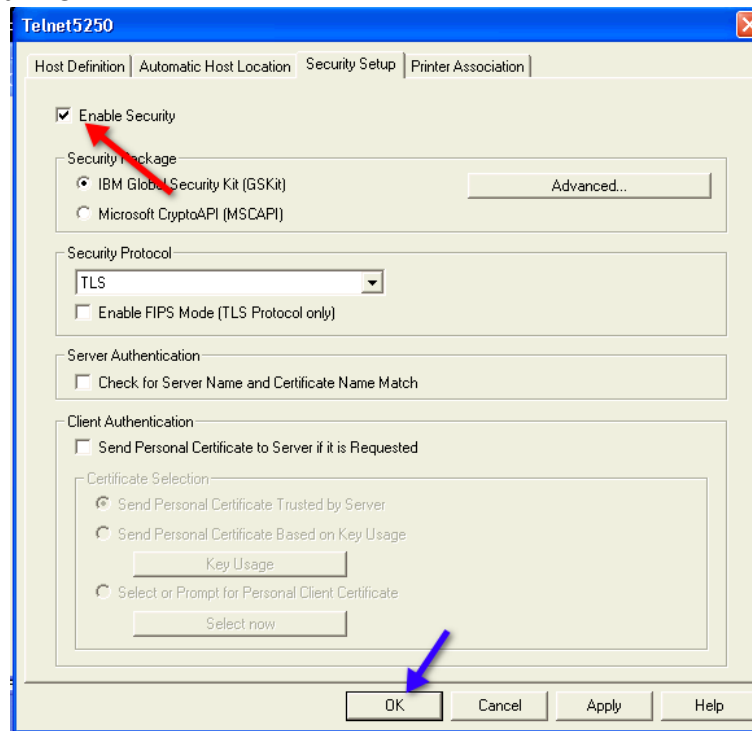


22. Click the Security Setup tab

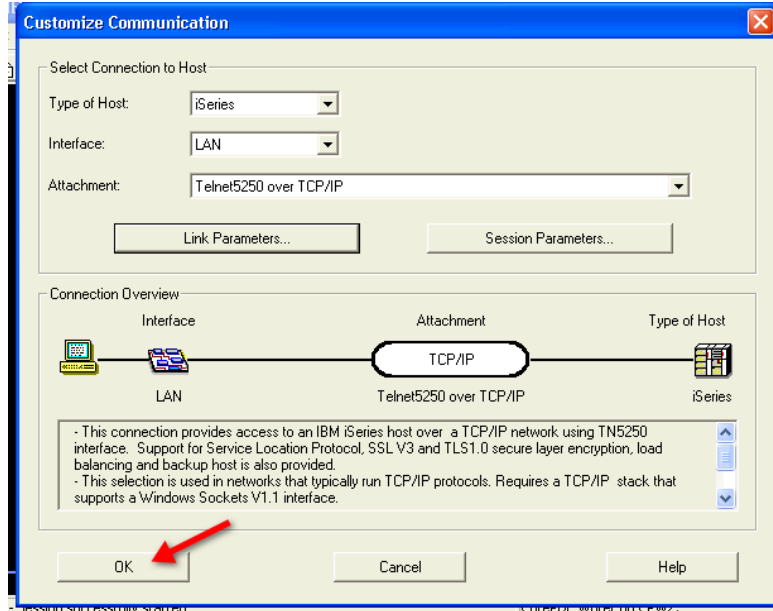


23. Check "Enable Security"

24. Click "OK"



25. In the Customize Communication window click “OK”



26. Click OK in the Pop-up window



27. Your session should now reconnect.

Note the Lock in the low left hand corner. This tells you your session is encrypted.

